

MONTHLY MEMBERSHIP PROGRESS REPORT

LOCATION ONTARIO

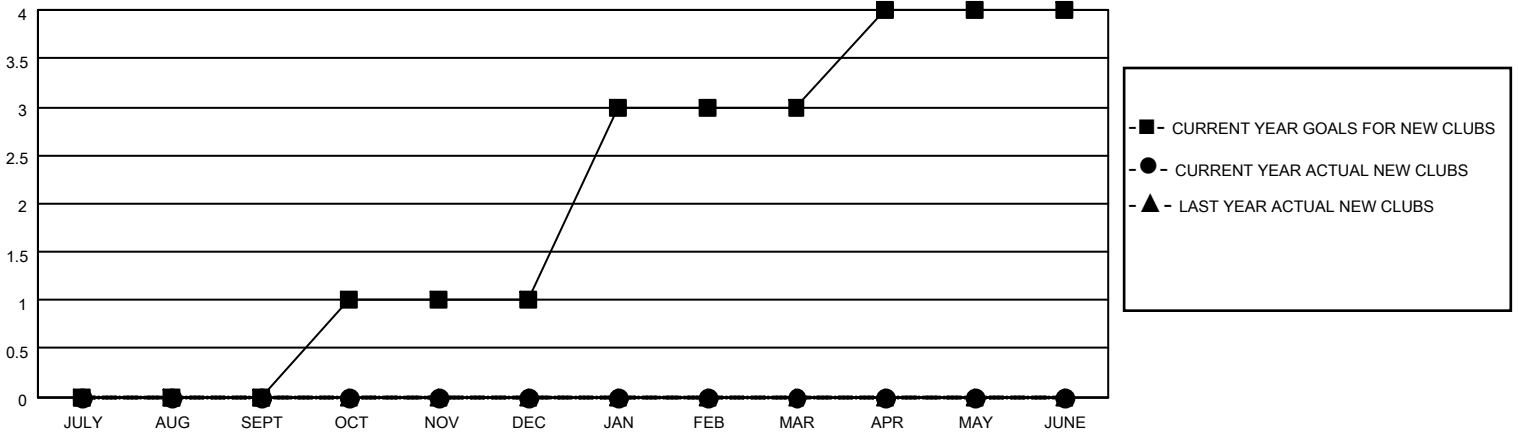
District A 15

Results as of: 2/28/2021

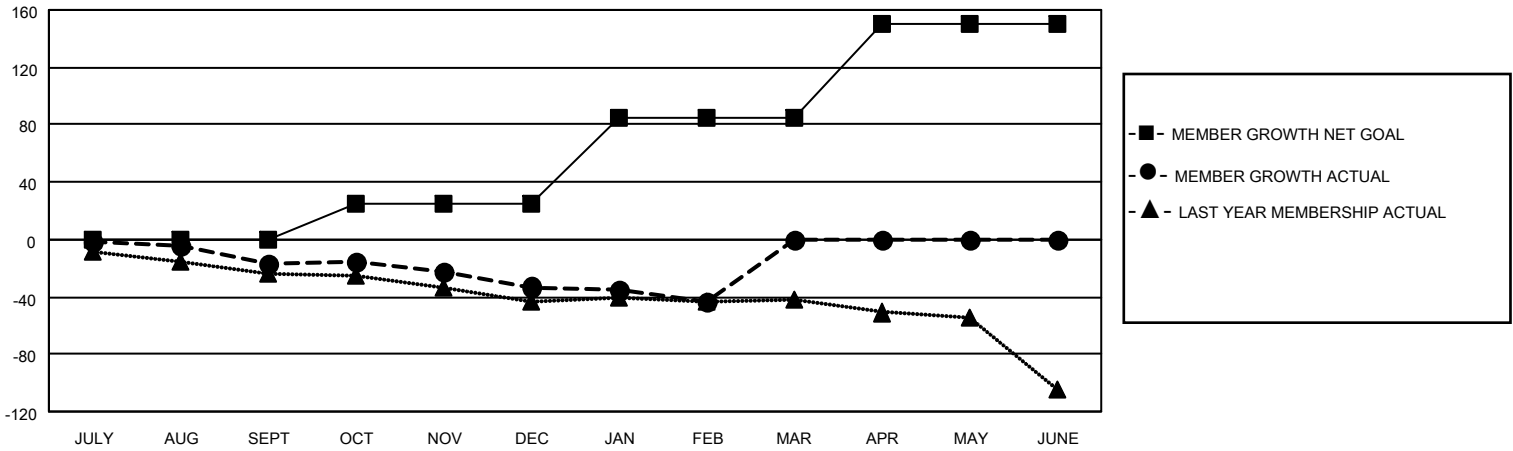
Clubs			
RESULTS FOR 2020-2021			
QUARTER	NEW CLUB GOAL	NEW CLUBS	DROPPED CLUBS
JULY/AUG/SEPT	0	0	1
OCT/NOV/DEC	1	0	0
JAN/FEB/MAR	2	0	1
APR/MAY/JUNE	1	0	0

Members			
RESULTS FOR 2020-2021			
QUARTER	MEMBER GROWTH NET GOAL	MEMBER GROWTH ACTUAL	DROPPED MEMBERS ACTUAL (including transfers)
JULY/AUG/SEPT	0	16	29
OCT/NOV/DEC	25	31	45
JAN/FEB/MAR	60	11	21
APR/MAY/JUNE	65	0	0

GOALS AND ACTUAL NEW CLUBS CUMULATIVE



GOALS AND ACTUAL MEMBERS CUMULATIVE



DROPPED CLUBS: 2

23 CLUBS OF 58 ADDED 1 OR MORE NEW MEMBERS

GENDER DISTRIBUTION

MALE 984 (74.32%)
FEMALE 340 (25.68%)

DROPPED MEMBERS

DECEASED	17
CLUB CANCELLED	1
OTHER	77
TOTAL	95

[CLICK HERE FOR CUMULATIVE MEMBERSHIP DATA](#)

TOTAL FAMILY UNIT MEMBERS	168
FAMILY MEMBERS PAYING HALF DUES	84